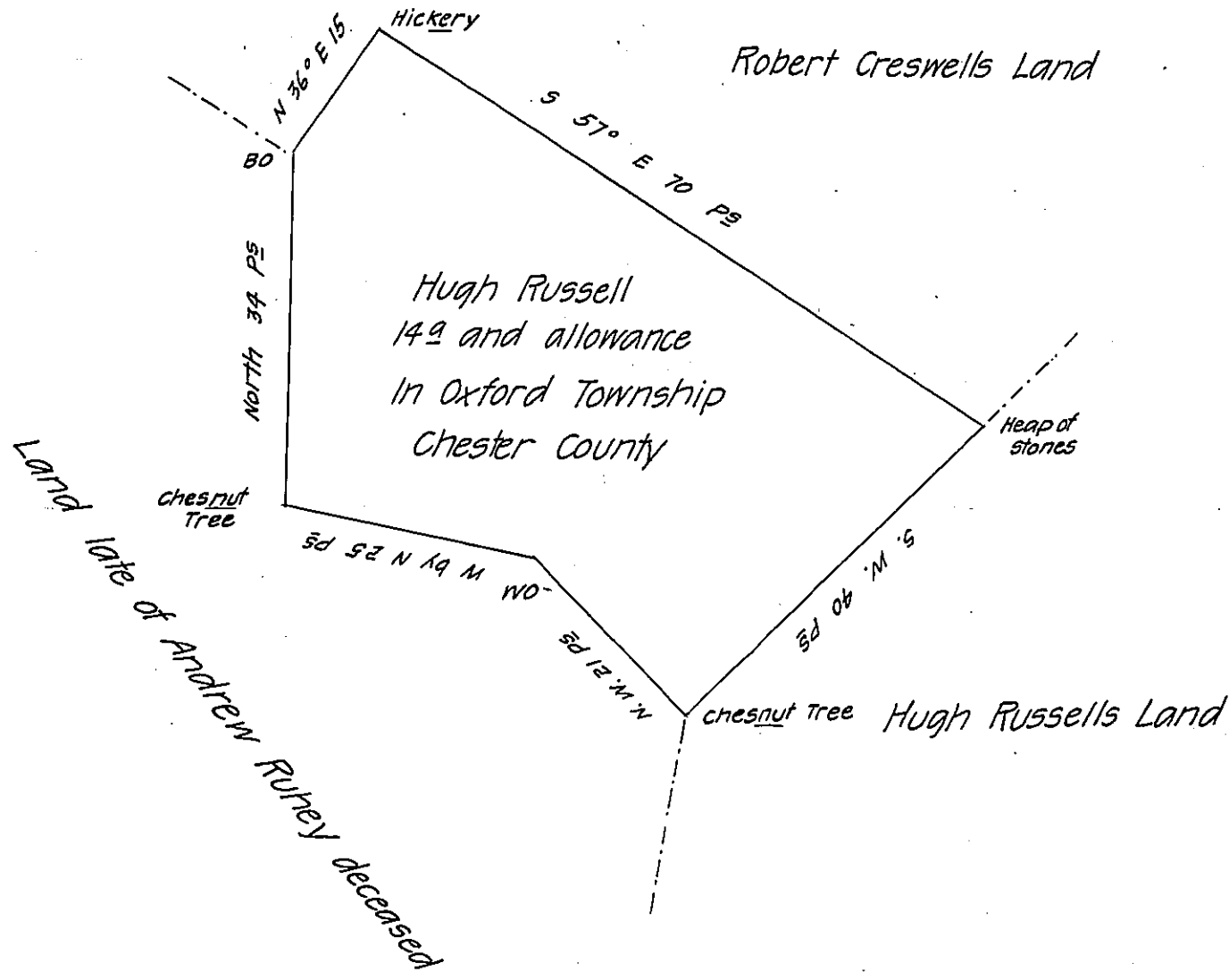


Robert Creswell.



The above draught describes the land surveyed for Hugh Russell situate in the Township of Oxford in the County of Chester Contain- ing fourteen acres and the usual allowance of 6 acres P. Cent for roads and highways Surveyed the 29th day of the 12th mo^o 1772 by virtue of a warrant dated the 15th of the same month and year. Surveyed by

Tho^s Woodward —

at the request of Tho^s Lightfoot

IN TESTIMONY that the above is a copy of the original remaining on file in the Department of Internal Affairs of Pennsylvania, made conformably to an Act of Assembly approved the 16th day of February, 1833, I have hereunto set my Hand and caused the Seal of said Department to be affixed at Harrisburg, this nineteenth day of April 1907

James P. Brown
Secretary of Internal Affairs.